

AUHOFSTRASSE 258 - 1130 WIEN

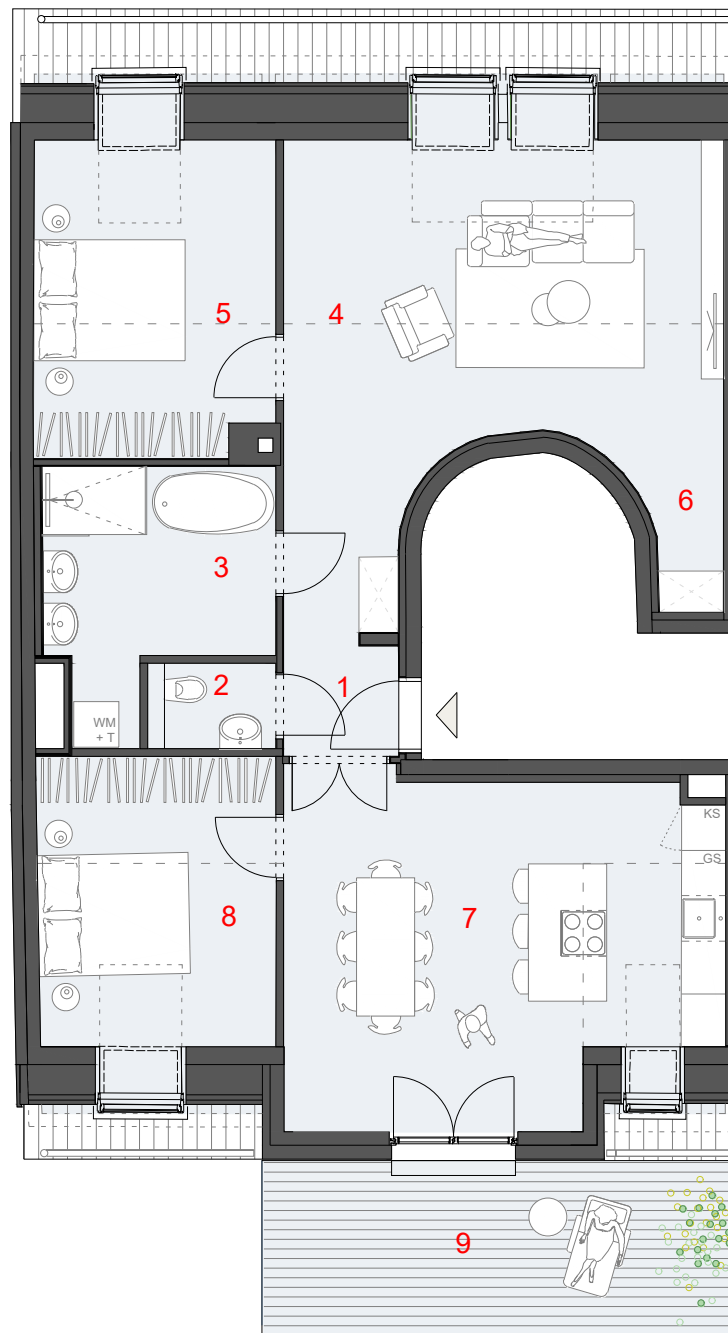
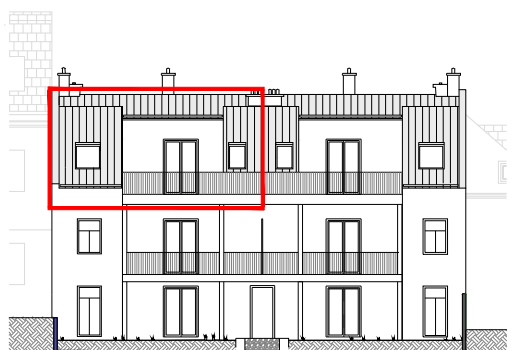
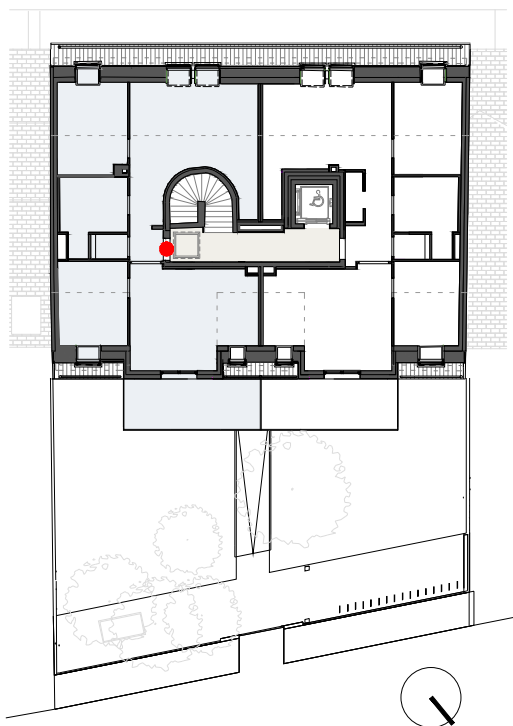
TOP 6 - DACHGESCHOSS

| | | | | |
|---|-------------|-----|-------|----------------|
| 1 | Vorraum | ca. | 5.07 | m ² |
| 2 | WC | ca. | 1.67 | m ² |
| 3 | Bad | ca. | 8.81 | m ² |
| 4 | Wohnzimmer | ca. | 29.64 | m ² |
| 5 | Zimmer 1 | ca. | 16.00 | m ² |
| 6 | Abstellraum | ca. | 2.48 | m ² |
| 7 | Wohnküche | ca. | 26.73 | m ² |
| 8 | Zimmer 2 | ca. | 14.81 | m ² |

WOHNNUTZFLÄCHE 105.21 m²

9 Balkon ca. 14.28 m²

Raumhöhe bis ca. 3.60 m



M 1:100 @A4