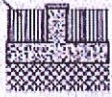


HOLZLATTEN



EDUNG M=1:100

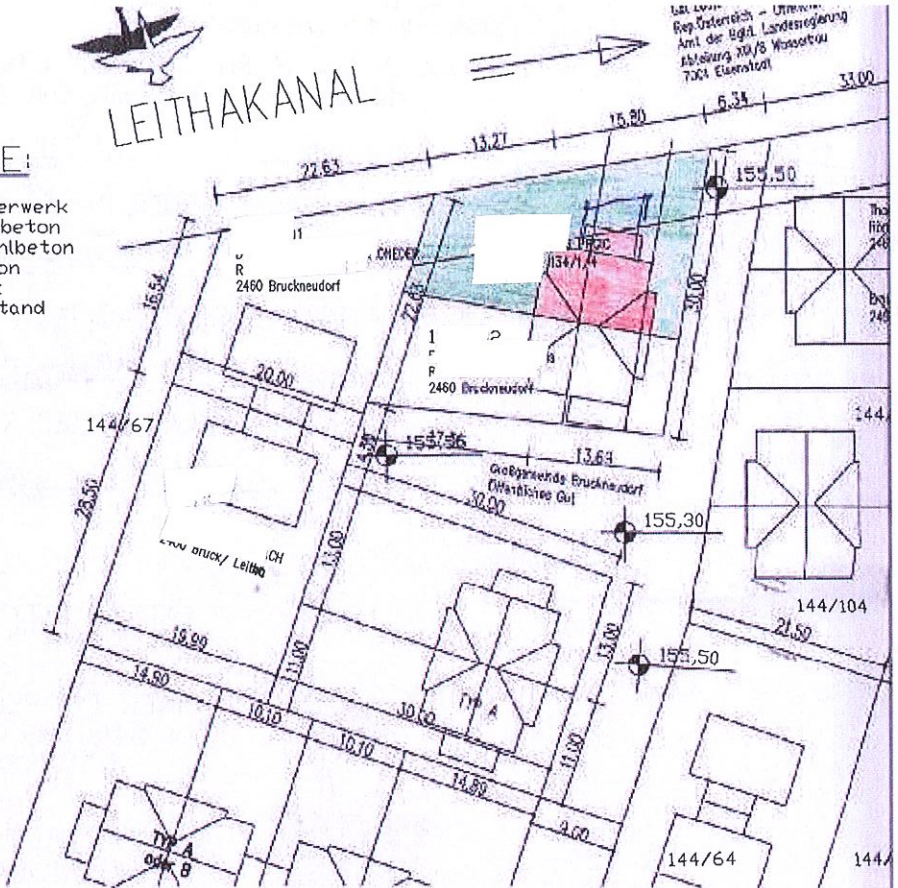
LEGENDE:

	Mauerwerk
	Kiesbeton
	Stahlbeton
	Beton
	Holz
	Bestand



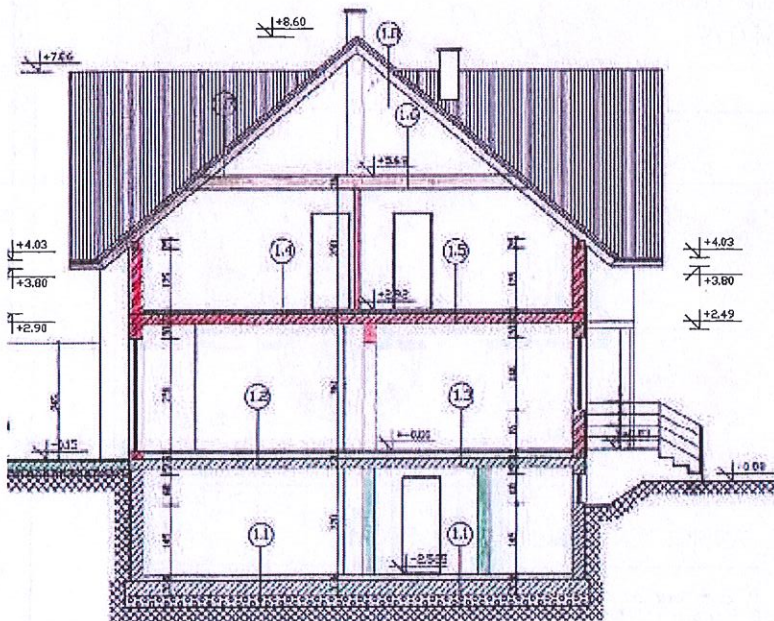
LEITHAKANAL

Österreich - Urm...
Reg. Österreich - Urm...
Amt der Bgld. Landesregierung
Abteilung 20/1/8 Wasserbau
7004 Eisenstadt



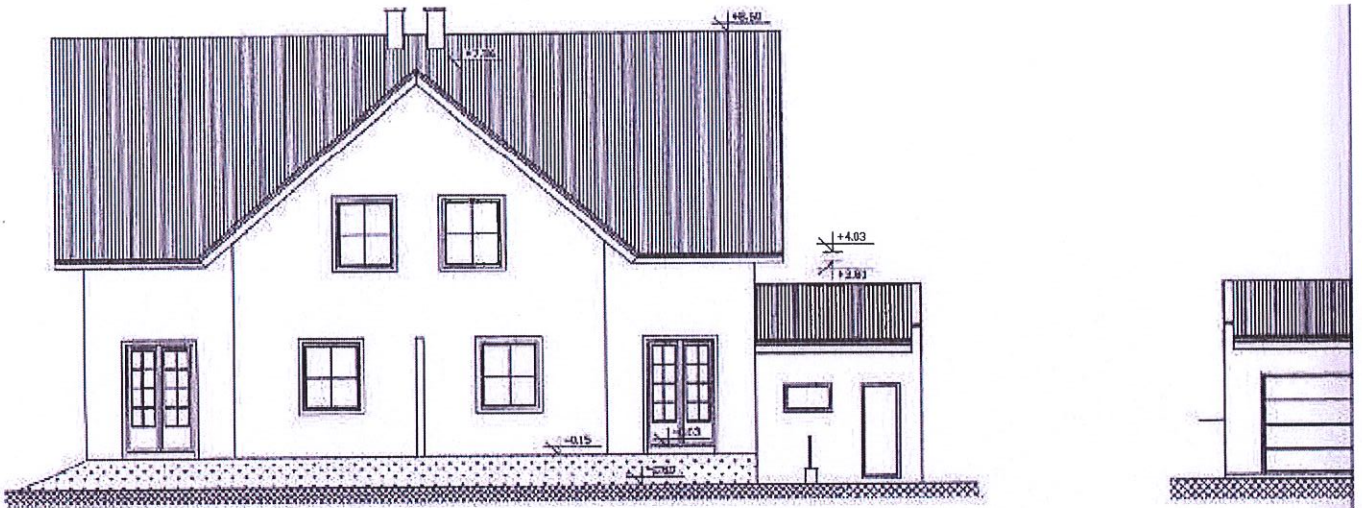
LAGEPLAN M= 1: 500

VERBAUTE FLÄCHE: 93,60 m²
 JMBAUTER RAUM: 558,54 m³
 NUTZBARE FLÄCHE: 109,45 m²

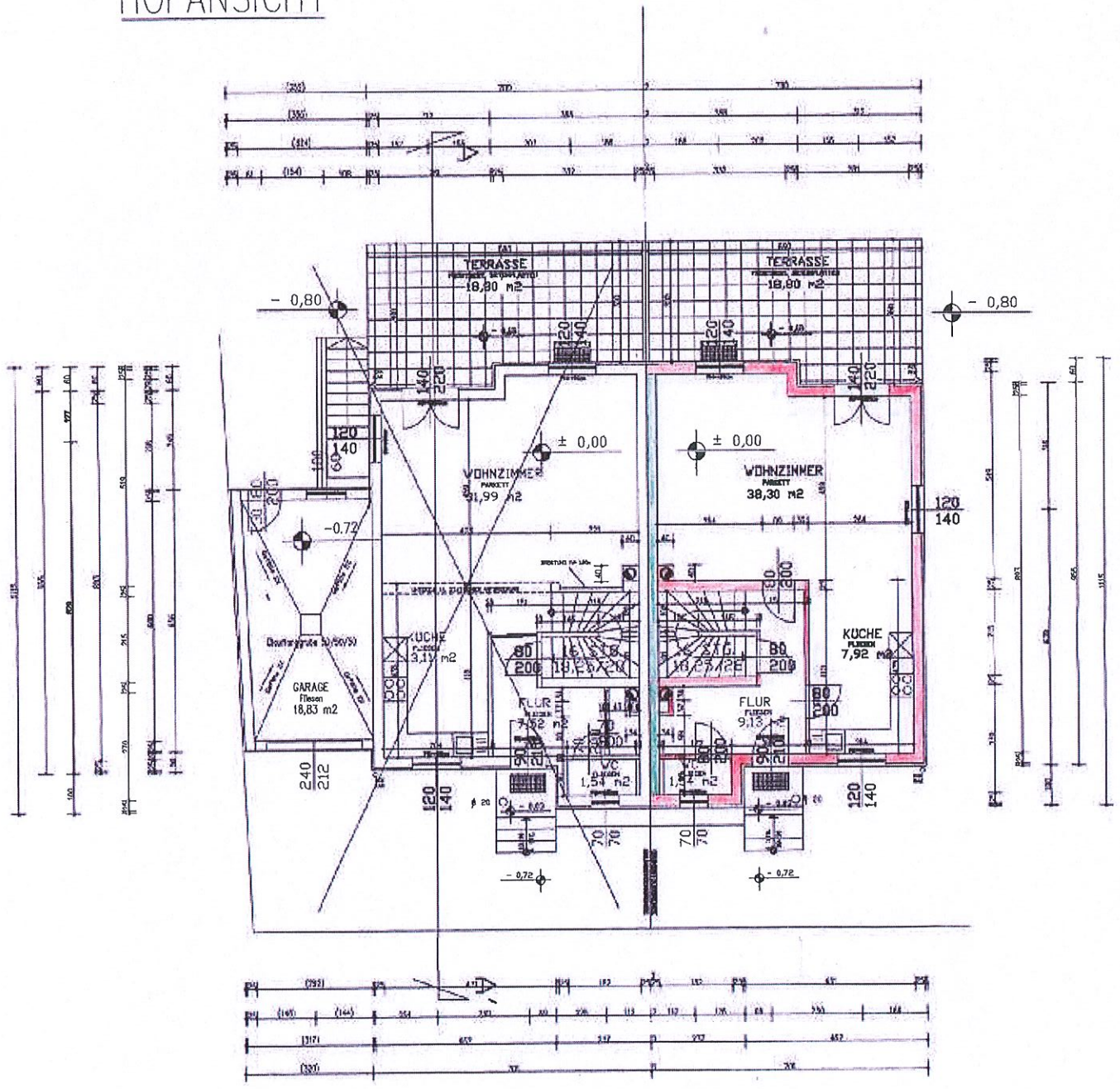


SCHNITT A-A'

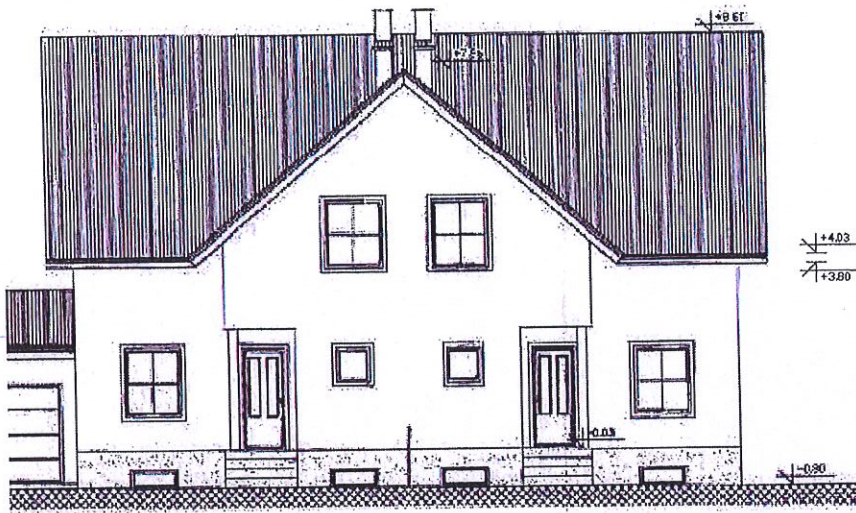
1.1) Fussboden KG mit Estrich 6,0 cm Schwimm. Estrich PAE- Folie 0.1mm 30,0 cm Stahlbetonplatte PAE- Folie Rollierung	1.6) Decke UK 3,0 cm 2,4 cm 16,0 cm 2,4 cm 1,5 cm
1.2) Fussboden EG 1,0 cm Bodenbelag 6,0 cm Schwimm. Estrich PAE- Folie 0.1mm 6,0 cm Styropor 20,0 cm Betondecke	1.7) Dachsch 3,0 cm 5,0 cm 2,4 cm 16,0 cm 16,0 cm
1.3) Fussboden EG mit keram. Belag 1,0 cm keram. Platten auf Kleber Alternativ Abdichtung 6,0 cm Schwimm. Estrich PAE- Folie 0.1mm 6,0 cm Styropor 20,0 cm Betondecke	1.8) Dachsch 3,0 cm 5,0 cm
1.4) Fussboden DG 1,0 cm Bodenbelag 6,0 cm Schwimm. Estrich PAE- Folie 0.1mm 3,0 cm Styropor 20,0 cm Betondecke	1.9) Terrassa 5,0 cm 15,0 cm
1.5) Fussboden DG mit keram. Belag 1,0 cm keram. Platten auf Kleber 5,5 cm Schwimm. Estrich PAE- Folie 0.1mm 2,5 cm Styropor 2,0 cm Sandausgleich 20,0 cm Betondecke	WI Ausenw 5,0 cm 25,0 cm 1,5 cm W2 Mittelwa 2,0 cm 25,0 cm 1,5 cm



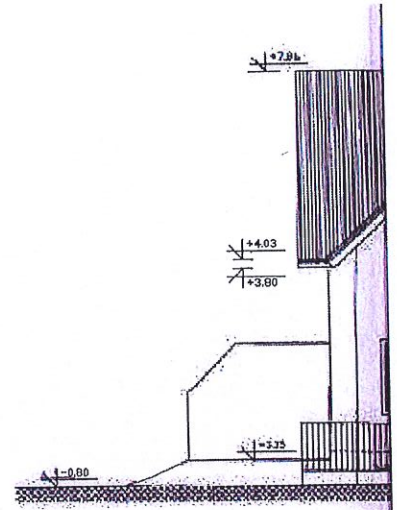
HOFANSICHT



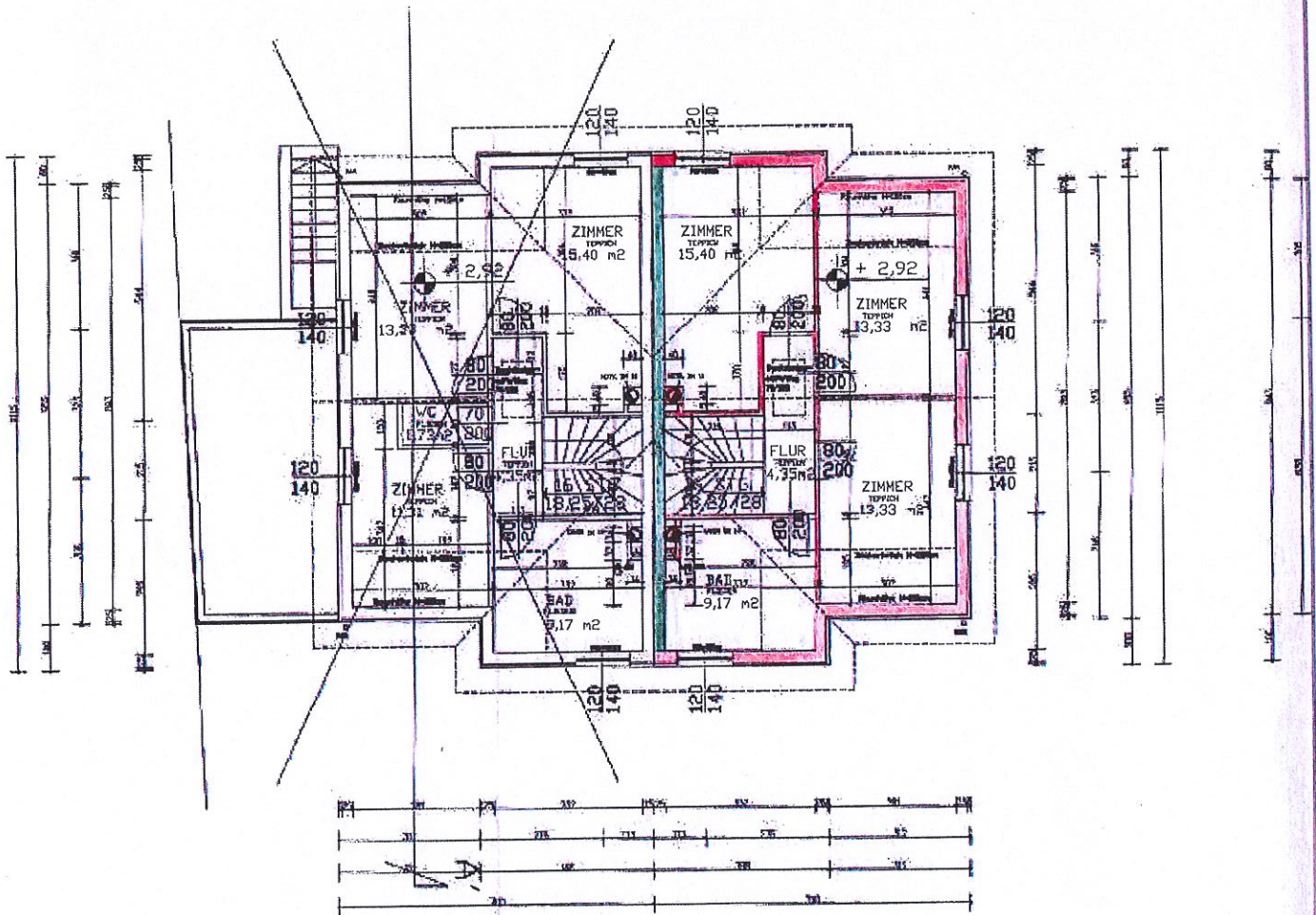
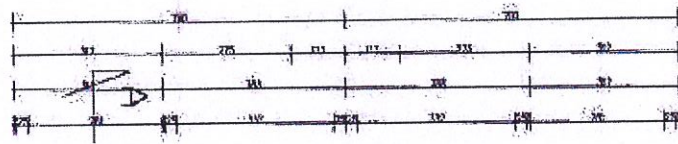
ERDGESCHOSS



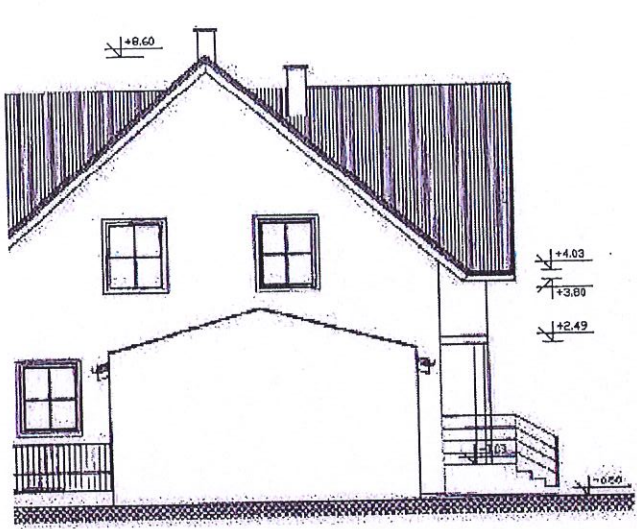
STRASSENANSICHT



SEITENANSICHT



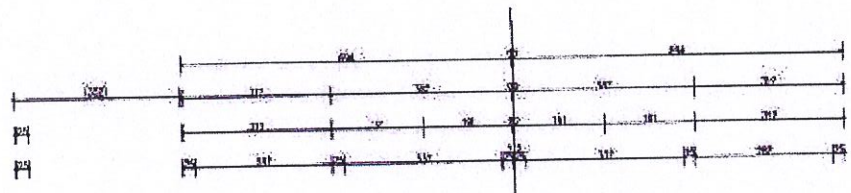
OBERGESCHOSS



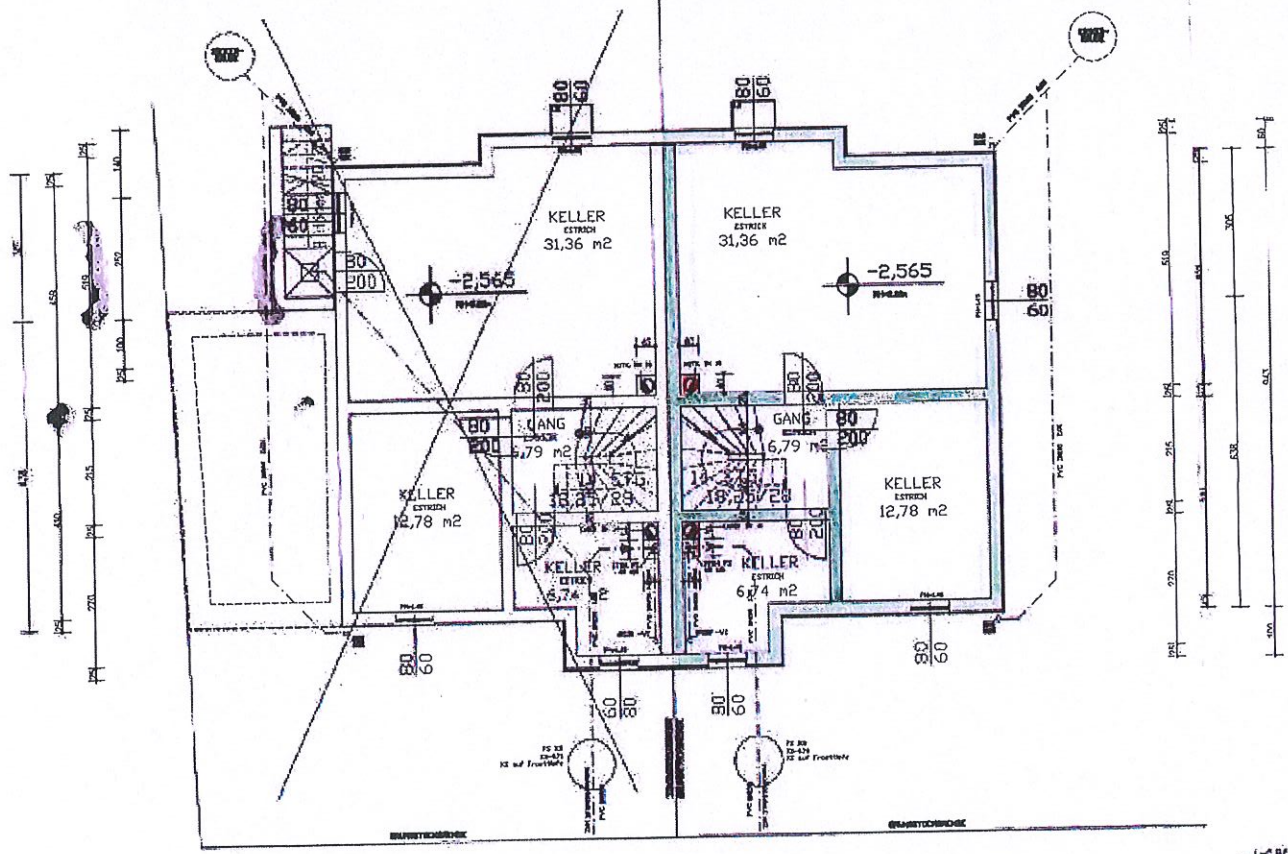
SICHT



SEITENANSICHT



EINFRI



KELLERGESCHOSS